

GAS CHROMATOGRAPHY MASS SPECTROMETRY ANALYSIS (%)

PURE ESSENTIAL OILS

ROSMARY

Rosmarinus officinalis



COUNTRY OF ORIGIN

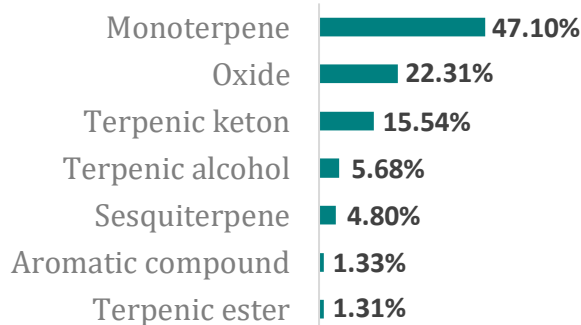
Bosnia, Herzegovina

DATE OF DISTILLATION

Summer 2017

BATCH

#103



Alpha-pinene	22.72
1,8-cineole	22.11
Camphor	13.51
Camphene	8.29
Limonene	4.39
Beta-caryophyllene	3.98
Beta-pinene	2.89
Alpha-phellandrene	2.73
Borneol	2.73
Verbenone	1.75
Beta-myrcene	1.45
Gamma-terpinene	1.43
Alpha-terpineol	1.34
Bornyl acetate	1.29
P-cymene	1.28
Alpha-terpinene	1.03
Terpinene-4-ol	0.84
Terpinolene	0.8
Alpha-humulene	0.5
Alpha-thuyene	0.4
Linalool	0.35
Geraniol	0.34
Pinadiene	0.32
Tricyclene	0.29
Delta-terpineol	0.19
Citronellol	0.18
Psi-limonene	0.13

Pulegone	0.04
Sesquiterpene	0.04
Menthadienol isomer	0.04
Campholenol	0.04
Linalool cis-oxide	0.03
Trans-thuyanol	0.03
Fenchol	0.03
Hotrienol	0.03
Terpenic alcohol	0.03
Sesquiterpene	0.03
Aliphatic ester	0.03
Gamma-curcumene	0.03
Sesquiterpene	0.03
Piperitone	0.03
Trans-piperitol	0.03
Alpha-curcumene	0.03
Aliphatic ester	0.03
Eugenol	0.03
Thymol	0.03
Sesquiterpenic oxide	0.03
Beta-fenchene	0.02
Cis-beta-ocimene	0.02
Trans-beta-ocimene	0.02
Hexenyl ester	0.02
Campholenic alcohol	0.02
Neoisopulegol	0.02
Cis-piperitol	0.02

Caryophyllene epoxide	0.11
Myrtenol	0.1
1-octen-3-ol	0.09
Pinocarpone	0.09
Beta-bisabolene	0.09
Methyleugenol	0.09
Acetone	0.07
3-octanone	0.07
Alpha-pinocamphone	0.07
Geranial	0.07
Alpha-fenchene	0.06
Delta3-carene	0.06
Trans-p-menth-2-en-1-ol	0.06
Isopulegol	0.06
Cis-p-menthene-2-en-1-ol	0.05
Trans-verbenol	0.05
Neral	0.05
Beta-sesquiphellandrene	0.05
Sabinene	0.04
1,3,8-p-menthatriene	0.04
3-octanol	0.04
Compound mw=122	0.04

Sesquiterpene	0.02
Geranyl acetate	0.02
Nerol	0.02
Sabinol isomer	0.02
Terpenic ester	0.02
Trans-carveol	0.02
P-cymene-8-ol	0.02
Epoxy-6.7-humulene	0.02
Aromatic compound	0.02
Isocarvacrol	0.02
Aromatic compound	0.02
Bornylene	0.01
2,3-dehydro-1,8-cineole	0.01
3-hexen-1-ol	0.01
Fenchone	0.01
O-methylanisole	0.01
Alpha-p-dimethylstyrene	0.01
Compound mw=152	0.01
E-geranyl acetone	0.01
Aliphatic alcohol	0.01
Diterpene mw=272	0.01
Carvacrol	0.01